

## How is disablement assessed?

Disablement is assessed by a medical examiner who will consider all relevant medical evidence and may require you to undergo further tests and scans.

The amount of benefit you receive will depend on the level of disability you have following the accident or the onset of the disease

Disablement is measured on a scale from 1% to 100%; e.g. 1% for the loss of a part of a toe, to 100% for conditions such as the loss of both hands.

You need to have a minimum of 14% disablement to receive a payment of IIDB.

**Aggregation of assessments** -If you have more than one accident the percentage from the previous accident can be added to the percentage from the new accident, e.g. loss of all toes (40%) and loss of a hand (60%) would give a total of 100%. So you should always claim for minor accidents at the time they happen even though it may not lead to any payment of IIDB.



**Pre-existing conditions** – if you already had a pre-existing condition which would have resulted in disablement even if the accident had not happened, then the percentage of disablement may be reduced. e.g. if you suffer a back injury as a result of an accident at work, but you already had osteoarthritis in the spine then the percentage of disability caused by the accident may be reduced.

## Other Industrial Injury Benefits

Constant Attendance Allowance is automatically considered if your disablement is more than 95%. You will receive up to £135.80 a week. You will get this instead of Personal Independence Payment or Disability Living Allowance or Attendance Allowance.

Exceptionally Severe Disablement Allowance – is automatically considered if you qualify for one of the two higher rates of CAA; this is an extra £67.90 a week.

For more information go to [www.citizensadvice.org.uk](http://www.citizensadvice.org.uk) or contact our Citizens Advice Helpline: 03444 111 444

Potteries Gold is a **Citizens Advice Staffordshire North & Stoke-on-Trent** project to help people in Stoke-on-Trent cope with changes to the benefit system  
[www.snsca.org.uk/about-us/potteries-gold](http://www.snsca.org.uk/about-us/potteries-gold)  
Follow us on Facebook and Twitter: search for **Potteries Gold**

© May 2017

# Potteries Gold

## Industrial Injuries Disablement Benefit



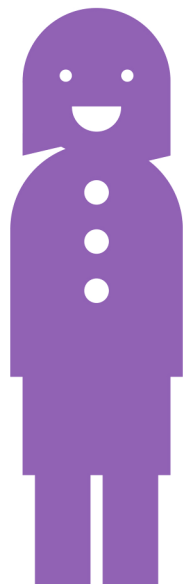
LOTTERY FUNDED

## What is Industrial Injuries Disablement Benefit (IIDB)?

If you have an accident at work or suffer from a disease which has been caused by your work, you may be able to claim compensation from the Dept. of Works and Pensions Industrial Injuries Disablement Benefit Scheme.

IIDB is a weekly benefit. The amount you could receive ranges between £33.94 and £169.70 a week. The amount you actually receive will depend on how disabled you are.

IIDB is paid in addition to any benefits or compensation you may receive from your employer. Self-employed people cannot claim.



## Industrial Diseases

To qualify for IIDB on the basis of an industrial disease, you will need to show that you have one of a list of over 70 prescribed industrial diseases and have worked in a prescribed occupation.

### For more information see:

<https://www.gov.uk/government/publications/industrial-injuries-disablement-benefits-technical-guidance>

The list of diseases is divided into four categories and each prescribed disease has a letter and a number:

**A Conditions due to physical agents** (physical cause) – e.g. A10 is occupational deafness.

**B Conditions due to biological agents** (caused by animal, plant or other living organism). e.g. B14 is Lyme Disease caused by exposure to animals that harbour ticks.

**C Conditions due to chemical agents** (chemical cause) e.g. C3a is Phossy Jaw caused by work involving exposure to white phosphorous.

**D Miscellaneous conditions** not included elsewhere in the list – these are mainly respiratory conditions: e.g. D1 is

Pneumoconiosis which is caused by exposure to silica in the manufacture of china or exposure to asbestos.

Some diseases have rules about the number of years you need to have worked in an occupation before you can qualify; e.g. for Chronic Obstructive Pulmonary Disease (COPD), IIDB is only payable to if you have worked underground in a coal mine for 20 or more years



Industrial Diseases are awarded a percentage of disability by the medical examiner. If you are more than 95% disabled you will also be entitled to Constant Attendance Allowance see over the page.

## Industrial Accidents

### What is an industrial accident?

If you had an accident while you are working which has resulted in a personal injury you may also qualify for IIDB.

It does not matter if the effect of the injury is immediate (for example, if you break your leg in a fall) or is delayed (for example, a blow to the knee which leads to impaired mobility at a later time).

It could also be a number of small accidents, e.g. Tony has a delivery job, in the weeks leading up to Christmas he has a lot of deliveries to make carrying heavy parcels from his van and he suffers a back injury and is no longer able to work. Each time he has carried a heavy parcel would be treated as a separate accident

