

The **Potteries Gold** Post

KEEPING OUT THE COLD

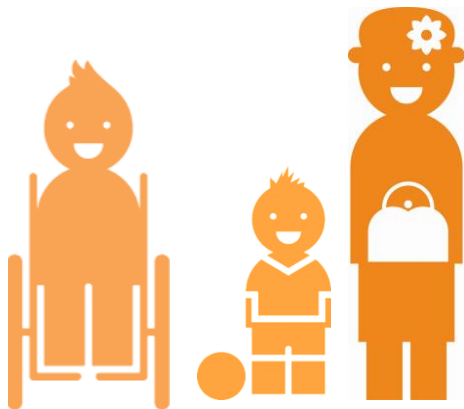
COLD WEATHER PAYMENTS

Last week's icy weather means **extra payments** for some people claiming benefits. As the average temperature in our area was recorded as **zero degrees Celsius** or below for **7 days in a row**, you should get a Cold Weather Payment of **£25** on top of your usual benefits if you get...

- Pension Credit
- Income Support
- **income-based** Jobseeker's Allowance
- **income-related** Employment and Support Allowance
- Universal Credit

And...

- You are over **Pension Credit age**
- Your benefit includes a **disability** or **pensioner premium**, or work-related activity element for UC
- You claim for a **child who is disabled**
- You get **Child Tax Credit** that includes a **disability** or **severe disability** element
- You have a **child under 5** living with you



In other cases, even if you are getting a means-tested benefit, you won't get a Cold Weather Payment.

If you are entitled to a cold weather payment, it is **paid automatically** – you do not need to make a claim for it.

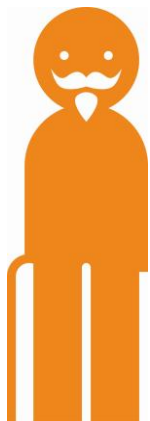
OTHER HELP WITH COLD WEATHER COSTS

Winter Fuel Payment

If you were born on or before **5 August 1953** you could get between £100 and £300 to help you pay your heating bills. This is known as a **Winter Fuel Payment**. You usually get a Winter Fuel Payment automatically if you get the **State Pension** or another social security benefit but you do not have to be retired to qualify. It is **not means-tested**. If you're eligible but don't get paid automatically - perhaps because you still work - you'll need to make a claim. Telephone: 0800 731 0160. You have until **31 March 2018** to claim for winter 2017 to 2018.

Warm Home Discount Scheme

You could get **£140 off your electricity bill** for winter 2017 to 2018 under the Warm Home Discount Scheme.



The money isn't paid to you - it's a one-off discount on your electricity bill, between September and March. There are two ways to qualify for the Warm Home Discount Scheme:

- you get the **Guarantee Credit** element of Pension Credit,
- you're on a **low income** and meet your energy supplier's conditions for the scheme.

People eligible via **Guarantee Pension Credit** should already have had a **letter** explaining how to claim. If you think you might be entitled due to low income, you should **contact your electricity supplier** and ask about the Warm Home Discount Scheme.

Potteries Gold is a **Citizens Advice Staffordshire North & Stoke-on-Trent** project to help people in Stoke-on-Trent cope with changes to the benefit system

★ **Benefit Talks for your community group** ★ **Pop-Up Benefit Advice** ★

★ **PIP/ESA Workshops** ★ **Benefit Leaflets** ★ **The Potteries Gold Post** ★ **Volunteering** ★

www.snsCab.org.uk/about-us/potteries-gold

Follow us on Facebook and Twitter: search for **Potteries Gold**



LOTTERY FUNDED